



Crystal Oscillators

LVDS/OCXO-7050 SMD/±5ppm/-20~+70°C
212.5MHz/3.3V/AS21250LOHB

Description

AS21250LOHB is LVDS-Output Oven Controlled Crystal Oscillator(LVDS-OCXO) of the 16pin-SMD 7×5mm package. LVDS-OCXO Series can be output to 10-250 MHz by Operating Voltage:3.3V(Oscillation) and 3.3V (Oven Heater:0.33w)in the heater power supply. As for the frequency stability level, ±1~±5ppm is -20~+70°C possible.

Feature

- 7×5×1.85mm SMD 16pin PKG
- Frequency stability:±5ppm/-20~+70°C/3.3V±5%
- Frequency short term stability:Warm up/5sec
- Phase noise:-70dBc/1Hz,-100dBc/10Hz, at 10MHz
- Phase Jitter:≤1psec RMS(10Hz to 10MHz)
- Power consumption:50mA(250MHz),50mA(Heater)/3.3V
- Operating temperature : -20~+70°C

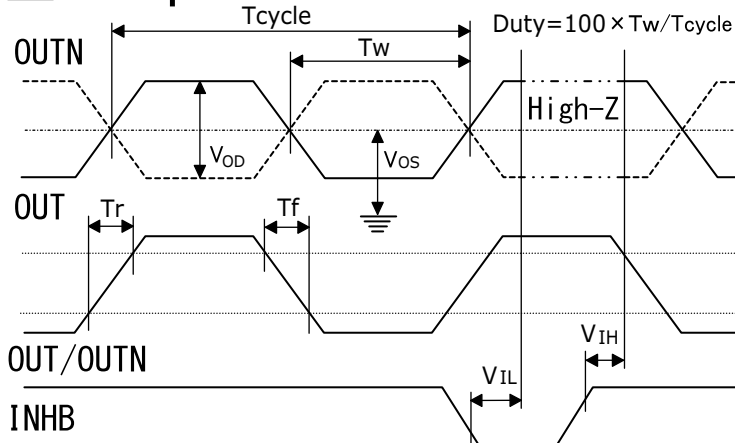
Product Number: AS21250LOHB

AS	21250	O:Function Series	H:Package	B:Version
Compny Code	Frequency 212.500MHz (10~250MHz)	O:SMD OCVCXO	16Lead SMD:7×5 ×1.85mm	B:-20~70°C ±5ppm,3.3V (typ:0.33W)

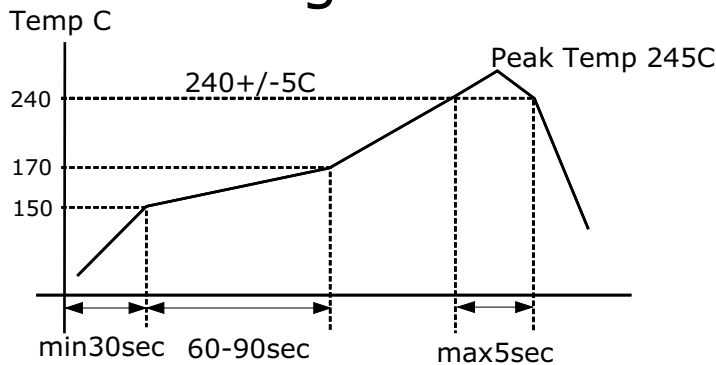
Specifications

ITEMS	TYPE	AS21250LOHB
Output Frequency:		212.500000MHz
Frequency Stability		±5ppm:-20 to +70°C/V _{dd} ±3.3V+/-5%
Output Wave Form		LVDS
Differential Output Voltage Magnitude		min:247mV typ:340mV max:454mV
Differential Output Voltage Magnitude Change		min:-50mV max:+50mV
Output Offset Voltage		min:1.125V typ:1.250V max:1.375V
Output Offset Voltage Change		min:-50mV max:+50mV
Warm-up time		5sec:to ±5ppm/final frequency/1 hour after/25°C
Phase Noise		Typ:-70dBc/1Hz,-100dBc/10Hz,-125dBc/100Hz at 10MHz
PhaseJitter		≤1psec RMS(10Hz to 10MHz)
Operating Temperature Range		-20 to +70°C
Storage Temperature Range		-40 to +85°C
Power SupplyVoltage/Oscillation		3.3V±5%
Power SupplyVoltage/Oven heater		3.3V±5%
Power Consumption/Oscillation(No load)		Typ:50mA/3.3V,Max:65mA/3.3V
Power Consumption/Oven Heater		Typ:50mA/3.3V,Max:100mA/3.3V
Input Level		Min:V _{IH} :+0.9V _{dd} Max:V _{IL} :+0.1V _{dd}
Output Level/CMOS		Min:V _{OH} :+0.9V _{dd} Max:V _{OL} :+0.1V _{dd}
Output Load		15pF
Output Rise/Fall Time		0.8nsec max(0.3 to 3.0V)/1.0nsec max(3.0 to 0.3V)
Assembly Temperature Range		Peak Temperature 240C +/- 5C for 5 sec max.Maximum Temperature 245C

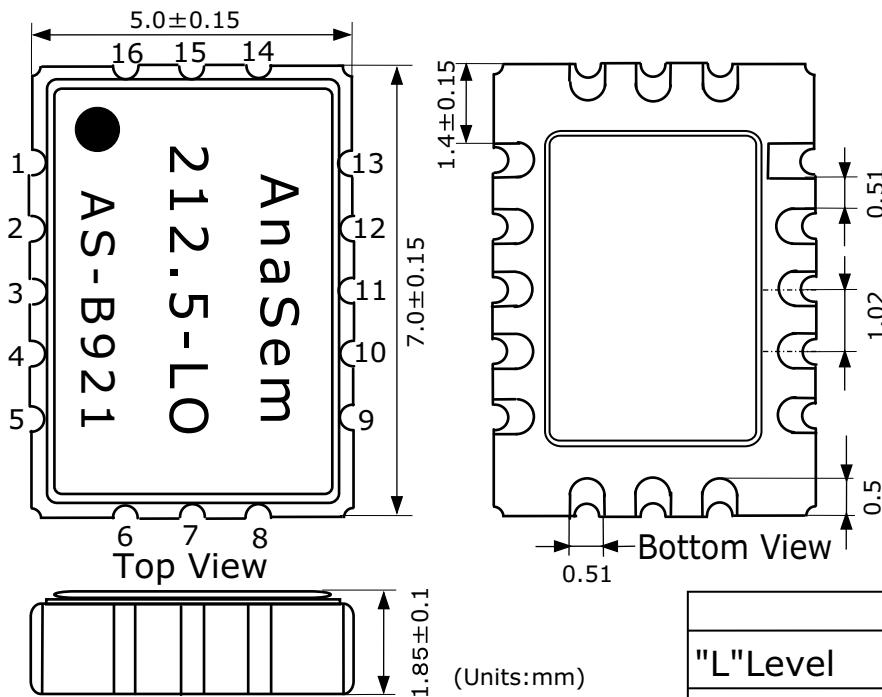
Output Waveform



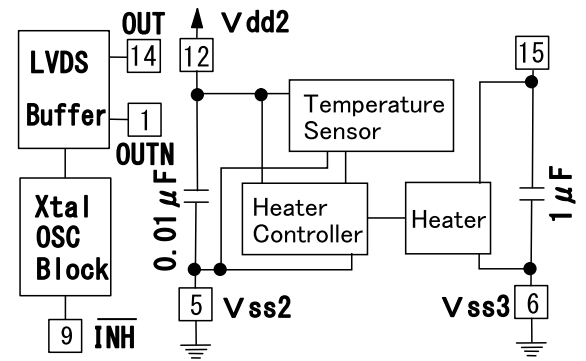
Recomended Reflow Soldering Condition



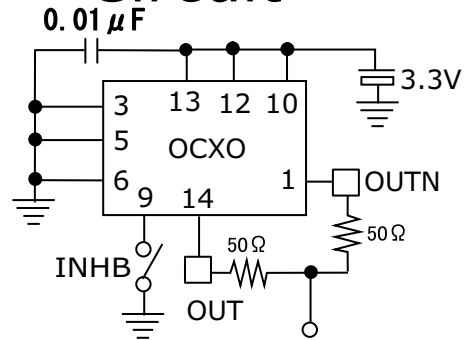
Dimintions



Block Diagram



Measurement Circuit



Pin Connections

1	OUTN
2	NC
3	Vss1(LVDS/OSC)
4	NC
5	Vss2(Tcnt)
6	Vss3(Heater)
7	NC
8	NC
9	INH
10	Vdd1(LVDS/OSC:3.3V)
11	NC
12	Vdd2(Tcnt:3.3V)
13	Vdd3(LVDS/OSC:3.3V)
14	OUT
15	NC(Heater)
16	NC

/INHIBIT	
"L"Level	Open or "H"Level
High Impedance	Enable:Output

AnaSem. InC

2-13-10 Maehara Nishi Funabashi Chiba Japan
 TEL (047) 470-5810 FAX470-5825
 Home Page: <http://www.anasem.co.jp>
 e-mail: support@anasem.co.jp